

# Vermont Islands 7200

## Options

Vinyl Cover Black  
SS Condiment Dispenser  
Umbrella with lights and  
mounting bracket

## Description

Solid Ipe "ironwood" outdoor  
cabinet.  
Locking storage.  
SS Top.

## Overall Dimensions

70 3/4" x 31" x 42"

## Weight

675 lbs

Side mounted  
umbrella with  
lights

18ga, 304 brushed  
Stainless Steel  
over 3/4" HDO top

Stainless Steel  
Tray Rail

Solid 3/4" Ipe  
vertical T&G  
panels and  
doors. Solid  
3/4" Ipe face

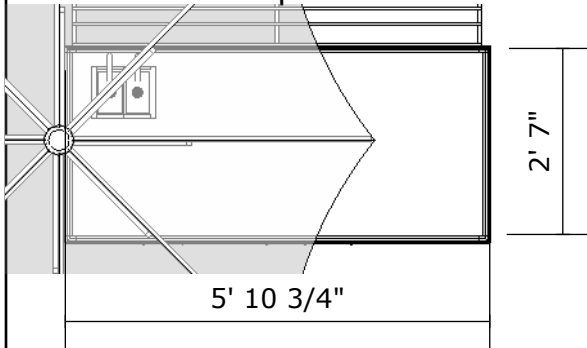
4" x 2"  
350 Lb  
Total Lock Caster

Locks

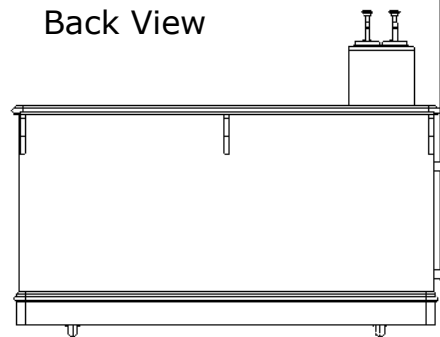
Vented  
HDO bottom

Solid Ipe  
skirt and  
rubber impact  
bumper

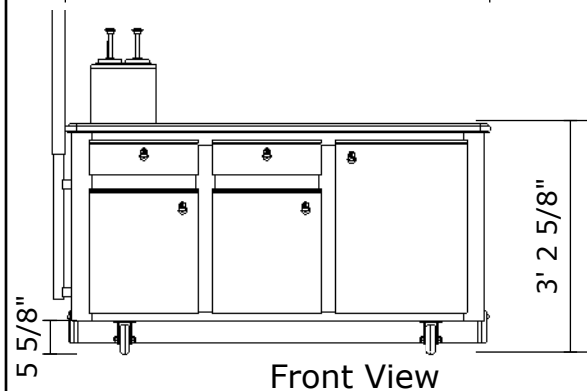
Top View



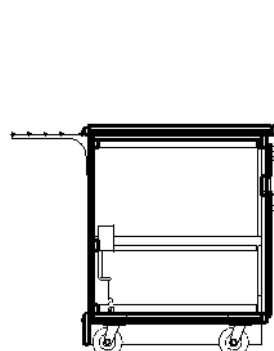
Back View



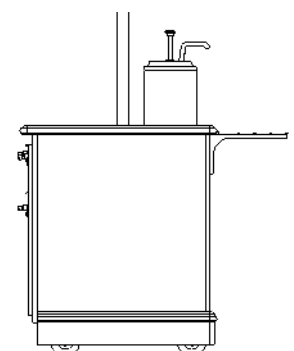
Front View



Section

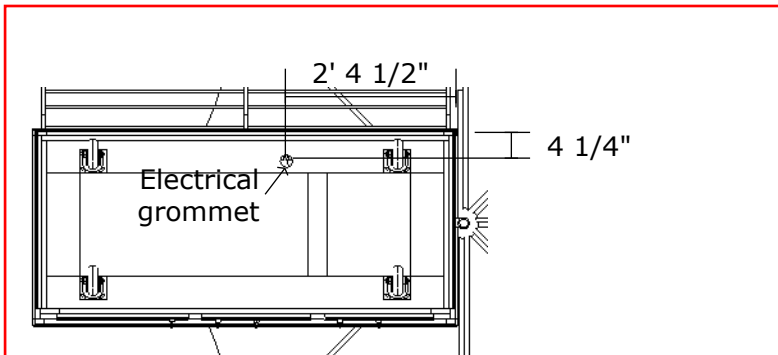


Side View

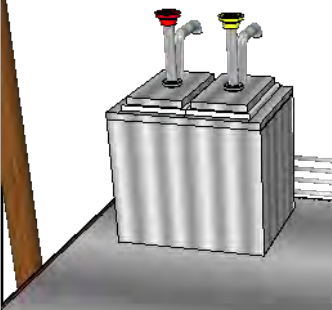


# Vermont Islands 7200

Bottom View



**Appliances**



**Server Ketchup &  
Mustard Dispenser**  
**Model SB-2 80160**  
Stainless Steel  
(2) 3.5 Qt. containers  
Colored knobs

**Mechanical**



**GFCI Outlet**  
20 Amp  
8' Cord w/ NEMA 5-15 plug

Shop Drawings - OK for production

Approved \_\_\_\_\_

Date \_\_\_\_\_