

# Vermont Islands

## 7205-3R

### Options

Vinyl Cover Black  
 SS Tray Rail  
 Shelf  
 LED light under shelf  
 27" UC Refrigerator

### Description

Solid Ipe "ironwood" outdoor cold buffet cabinet. Stainless steel top. Locking storage. 3-Pan SS insulated ice well with drain.

### Special

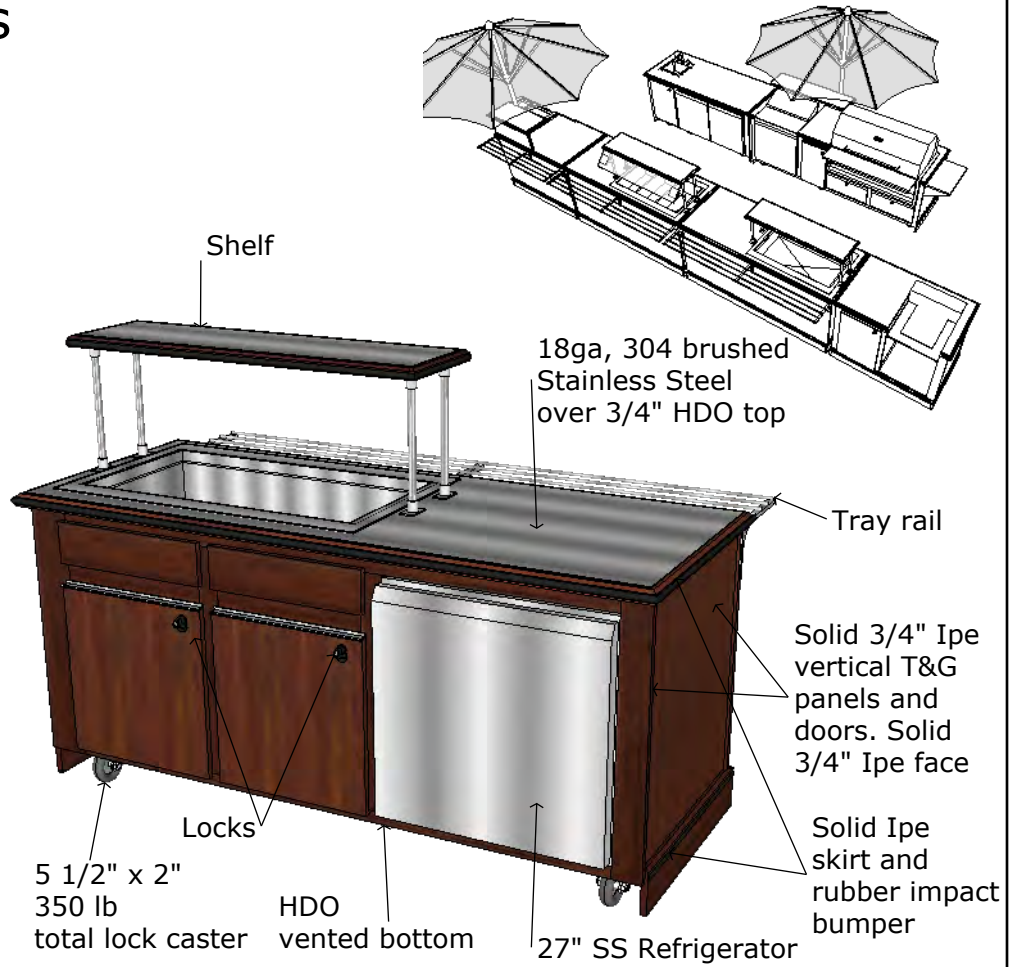
Add 12' quick connect garden hose to drain (after valve)

### Overall Dimensions

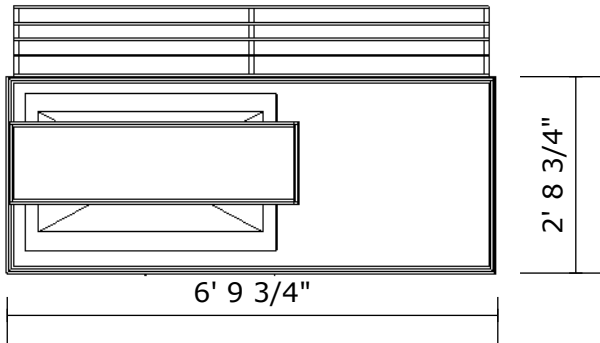
81 3/4" x 32 3/4" x 38 3/8"

### Weight

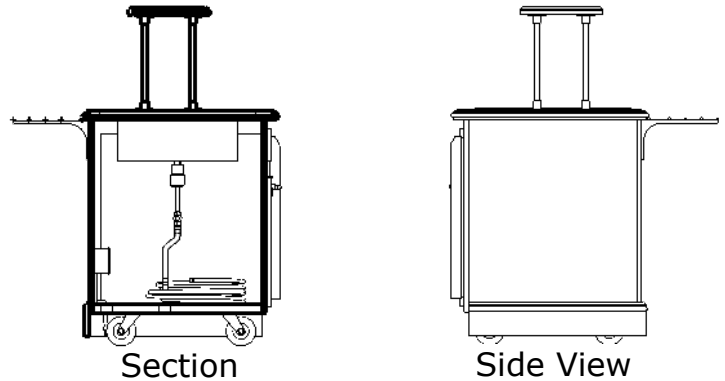
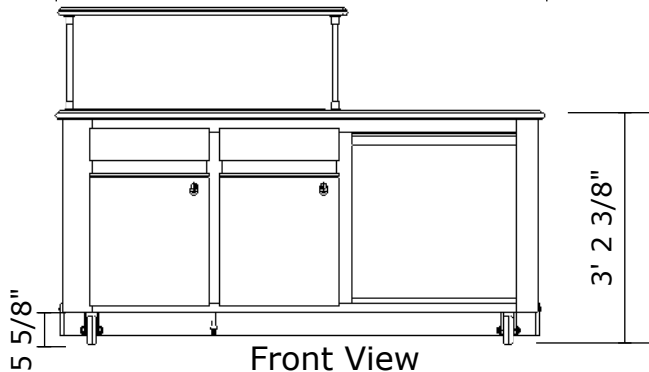
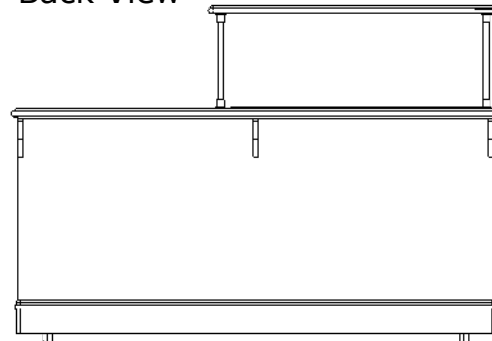
750 lbs



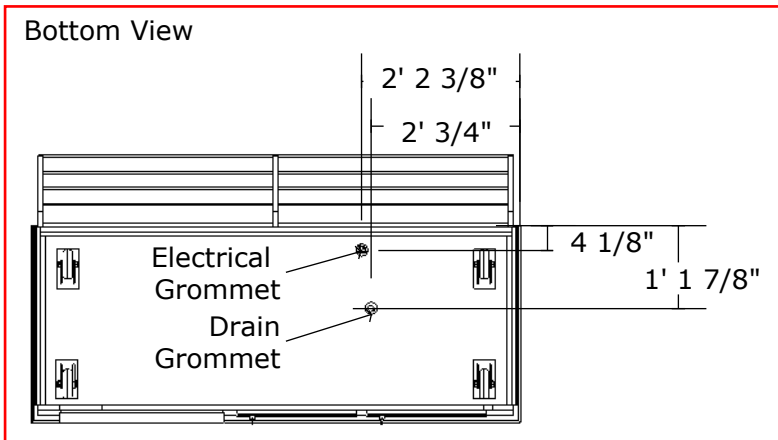
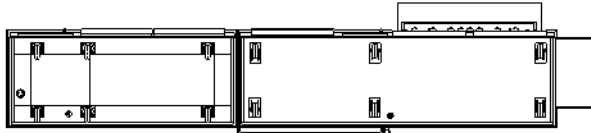
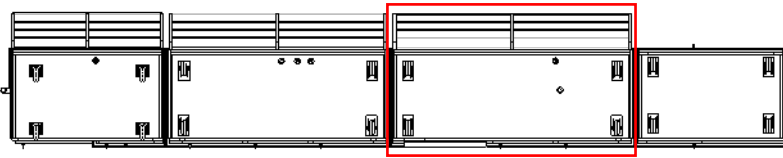
Top View



Back View

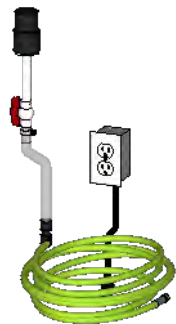


# Vermont Islands 7205-3R

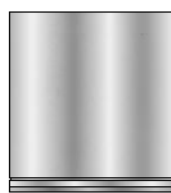
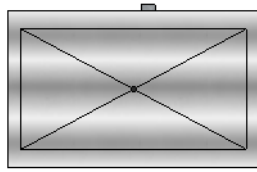
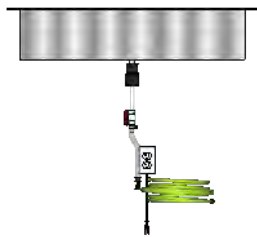


## Plumbing

- Drain Pipe
- Ball Valve
- Garden Hose Quick-Connect
- Garden Hose (12')



## Appliances



### Vollrath Non-Refrigerated Insulated Cold Pan - 3 Pan

Fits standard hotel pans  
18-8 Stainless Steel  
1" Integrated drain  
8" Deep

### Continental Refrigerator UC27

7.4 cu. ft.  
115V / 60Hz / 1 phase  
6.1 Amps  
NEMA 5-15 Plug Type

### GFCI Outlet

20 Amp  
8' Cord w/ NEMA 5-15 plug

Shop Drawings - OK for production

Approved \_\_\_\_\_

Date \_\_\_\_\_