

Vermont Islands 7210-S

Options

Vinyl Cover Black
Sink
Self contained water system

Description

Refrigerated Prep Island
Solid Ipe "ironwood" outdoor cabinet.
Stainless Steel Top.
Locking storage.

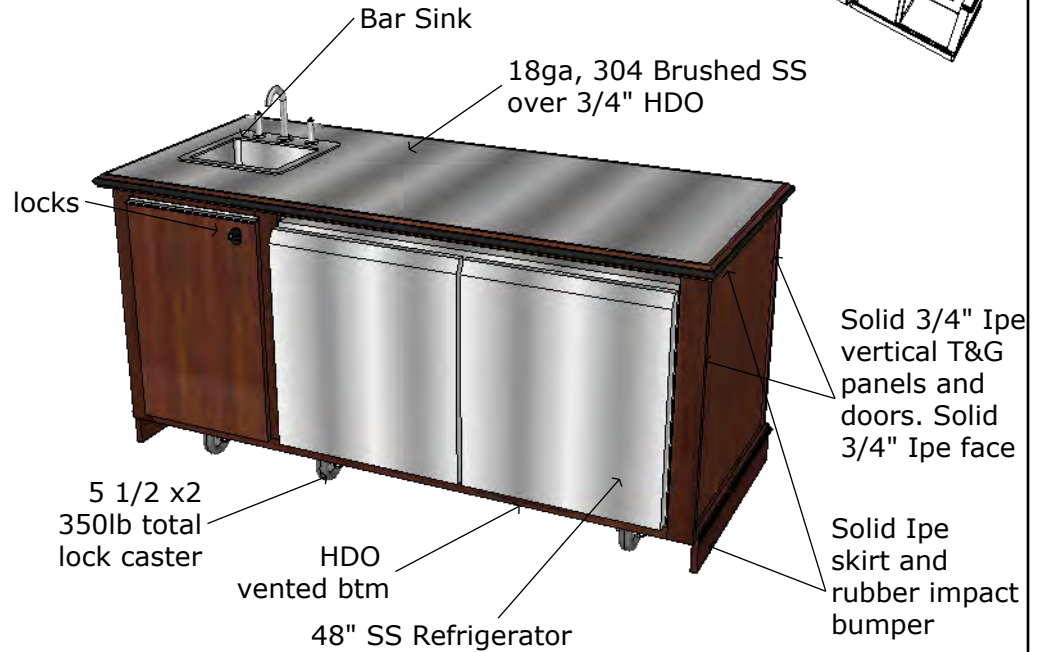
48" SS Refrigerator

Overall Dimensions

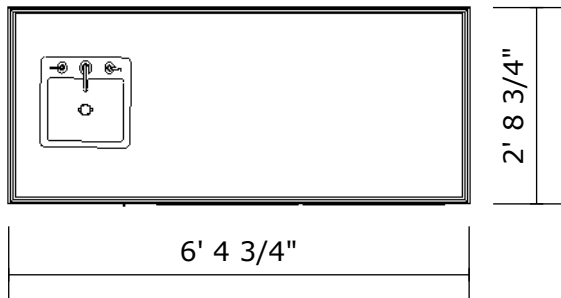
76 3/4" x 32 3/4" x 38 3/8"

Weight

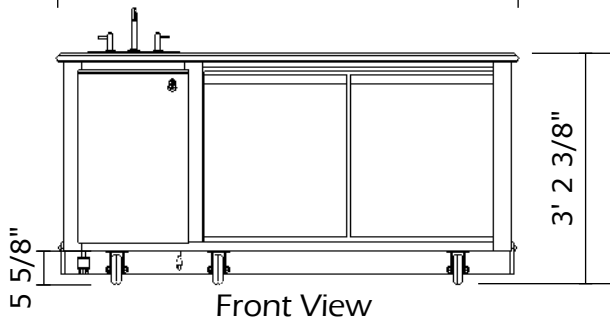
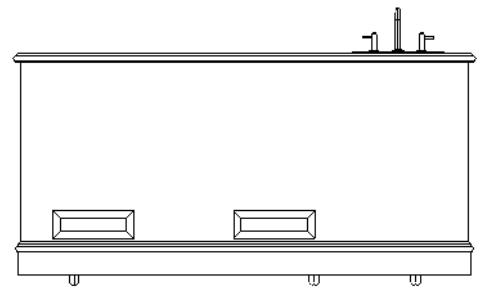
600 lbs



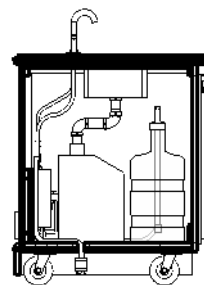
Top View



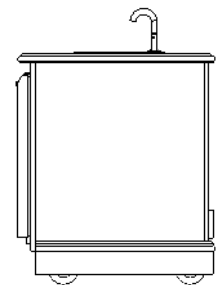
Back View



Front View

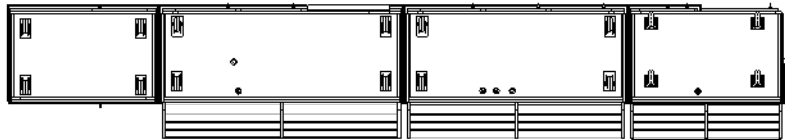
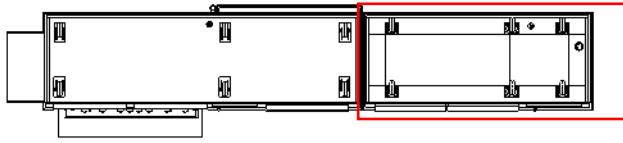


Section

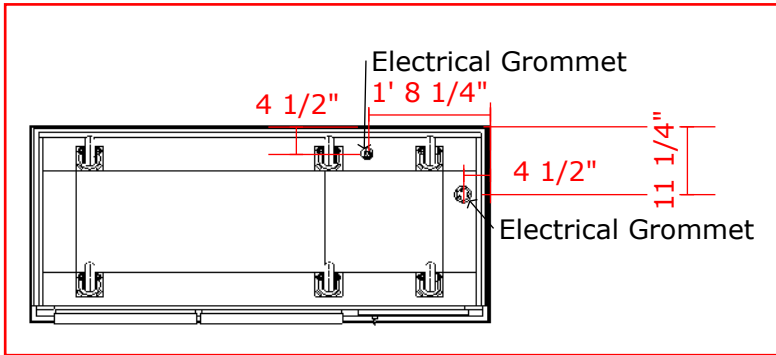


Side View

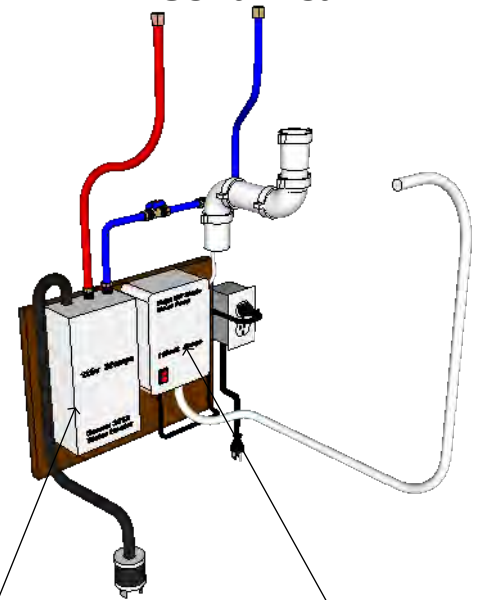
Vermont Islands 7210-S



Bottom View

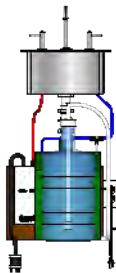


Mechanical

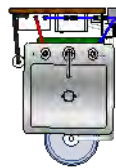
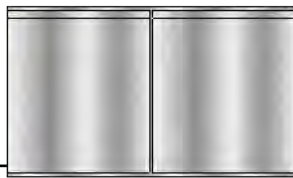


GFCI Outlet
20 Amp
8' Cord w/ NEMA 5-15 plug

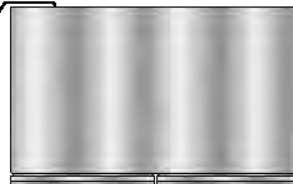
Appliances



Continental Refrigerator UC48
13.4 cu. ft.
115V / 60Hz / 1 phase
7.1 Amps
NEMA 5-15 Plug Type



Elkay Neptune Bar Sink
23 gauge stainless steel
15" x 15" x 6"
2" Drain
2 faucet holes
(1-1/4" dia. 4" center)



Eemax 3012 Hot Water Heater
120V / 60Hz / 1 phase
25 Amps
NEMA L5-30 Plug Type

FloJet Water Pump
115V / 60Hz / 1 phase
.5 Amps
NEMA 5-15 Plug Type

Shop Drawings - OK for production

Approved _____

Date _____