

8001 Wait Stations

Description:

Mobile outdoor Ipe (ironwood) cabinet with backsplash housing granite counter-top work area, space for POS station, locking sliding doors, and with accessory options for adjustable height shelves and/or drawers, sinks, ice bins, refrigeration, beverages, waste and recycle bins.

Standard Features:

- Solid ipe hardwood construction
- Heavy duty 4"x2" casters
- Locking front casters
- Locking sliding doors
- Storage slot for sliding doors
- Granite counter tops
- Counter-top access grommets

Specifications:

Unit dimensions:

- Length - 80 3/4"
- Width - 31"
- Height (overall) - 44"
- Height (counter) - 40 3/4"
- Weight - 1100 Lbs.

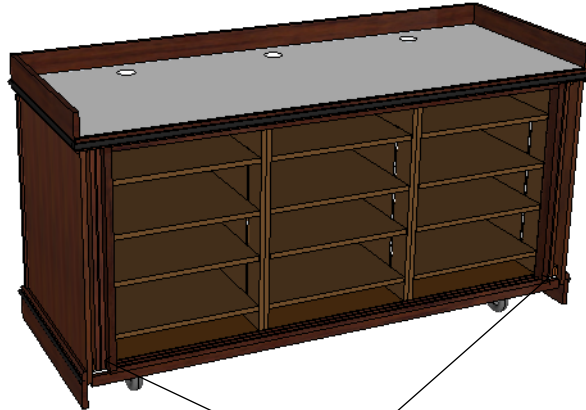
Crated for shipping dimensions:

- Length - 89"
- Width - 39"
- Height - 54"
- Weight - 1400 Lbs.

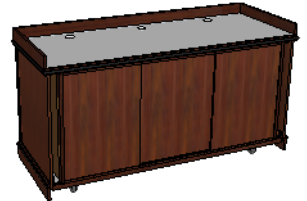
Accessories & Options:

- Adjustable internal drawers & shelves
- Ice & Water Fill Station
- Sink
- Self Contained Hot & Cold Water
- Self Contained Cold Water
- Refrigerator
- Cups and Cold Drawers
- Counter top waste bucket with lid
- Counter top waste chute with lid
- Waste / recycle bins
- Umbrella Holder
- Swinging doors
- Solid surface material counters

Model 8001-S4-S4-S4 shown



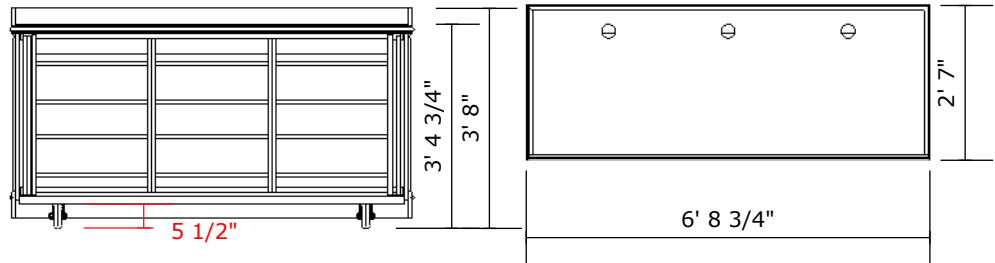
Shown with doors closed



Sliding door storage slots

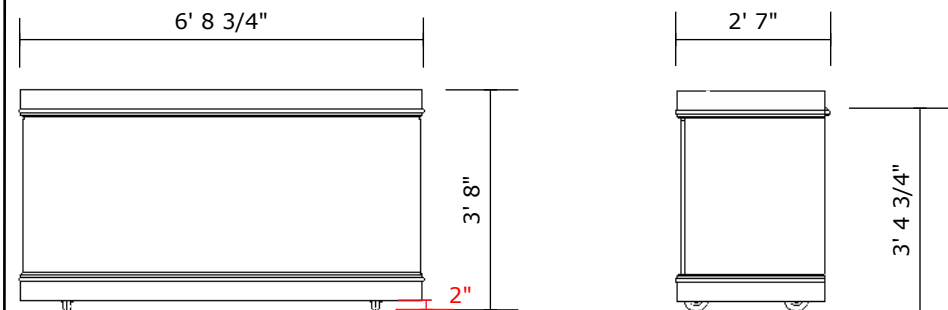
Front View

Top View



Back View

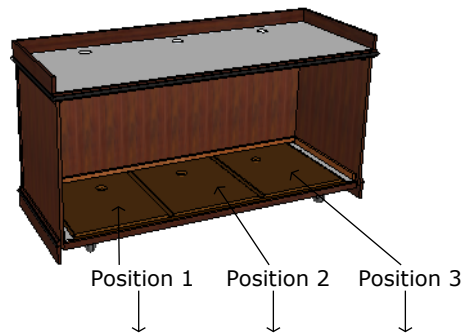
Side View



8001 Wait Stations

Configure Model Options

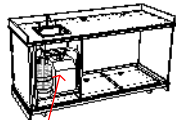
Start with an empty 8001 Wait Station (left) and configure it to meet your needs from the standard modular options below. Write the module codes for the corresponding position in the SKU # by making the following choices:



- 1) Choose position 1 module
- 2) Choose position 2 module
- 3) Choose position 3 module

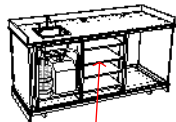
8001- _____ - _____ - _____ Wait Station

1) Choose position 1 module



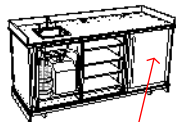
8001-SHCW- _____ - _____

2) Choose position 2 module

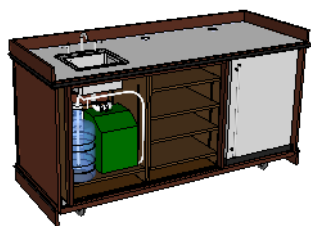


8001-SHCW-S4- _____

3) Choose position 3 module

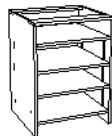


8001-SHCW-S4-REF

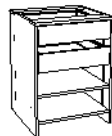


8001-SHCW-S4-REF

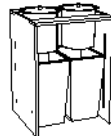
Configuration Modules



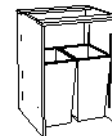
S4 - Shelf module with 4 adjustable shelves



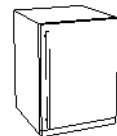
DS - Drawer & shelf with 2 adjustable drawers & 2 adjustable shelves



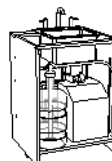
TRB or TRC - Recycle and waste bins with countertop buckets (B) or chutes (C)



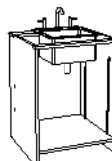
TR - Recycle and waste bins



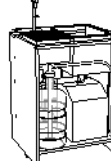
REF - 5.5 cu ft stainless steel refrigerator - Works best in position 3



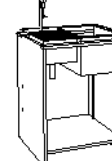
SHCW - Sink with self-contained hot and cold water (HCW)



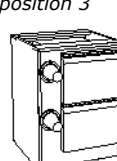
S - Sink



IWCW - Ice & water fill station with self-contained cold water (CW)



IW - Ice & water fill station



CD - Ice cooled stainless steel cold drawers (2) & cup dispensers (2)

Item Code	Description
8001	80" Wait Station
S4	Shelf module
DS	Drawers & shelves module
TRB	Trash & recycle bins with countertop buckets
TRC	Trash & recycle bins with countertop chutes
TR	Trash & recycle bins
S	Sink
SHCW	Sink with self-contained hot & cold water
IW	Ice & water fill station
IWCW	Ice & water fill station with self-contained cold water
CD	Cup dispensers (2) & cold drawers (2)
REF	5.5 cu. Ft. stainless steel refrigerator
SOL **	Upgrade to solid surface counters
SWD **	Upgrade to swing doors
VC **	Vinyl Cover
UB **	Market Umbrella Holder Bracket

** Add code to end of item SKU #

8001 Wait Stations

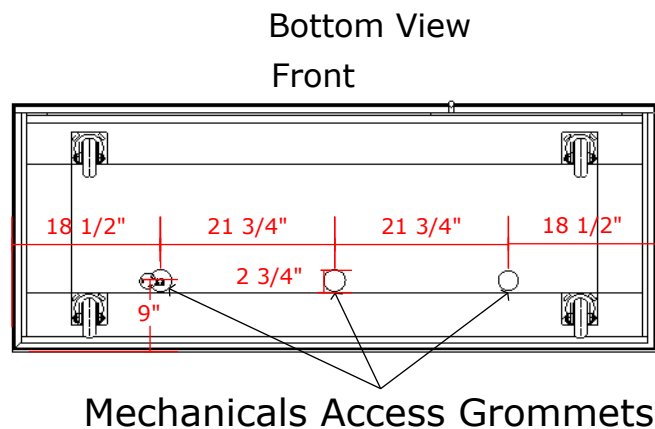
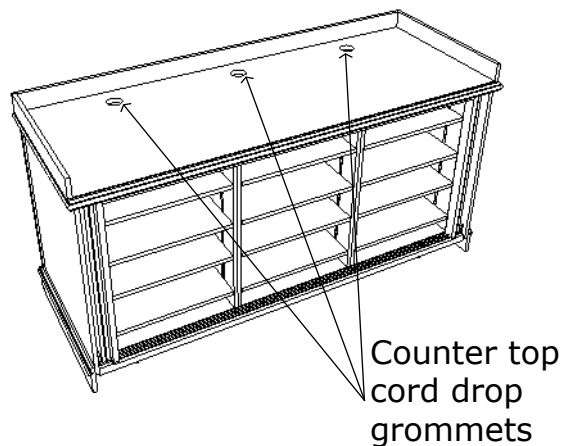
Mechanicals Access

All wait stations come with a 15 Amp 120V GFCI outlet with 9' cord and NEMA 5-15 plug type in the cabinet.

Counter tops have 2" access grommets for electric and data cables.

Access grommets are provided in the base of all units at fixed intervals for easy access to electrical, data and plumbing connections.

End user is responsible for final connections.



Shop Drawings - OK for production

Approved _____

Date _____