

8001T Wait Stations

Description:

Mobile outdoor Ipe (ironwood) cabinet with tall sides and top shelf housing granite counter-top work area, space for POS station, locking sliding doors, and with accessory options for locking roll-down doors, adjustable height shelves and/or drawers, sinks, ice bins, refrigeration, beverages, waste and recycle bins.

Standard Features:

- Solid ipe hardwood construction
- Heavy duty 4"x2" casters
- Locking front casters
- Locking sliding doors
- Storage slot for sliding doors
- Granite counter tops
- Counter-top access grommets

Specifications:

Unit dimensions:

- Length - 80 3/4"
- Width - 31"
- Height (overall) - 64 1/2"
- Height (counter) - 40 3/4"
- Weight - 1400 Lbs.

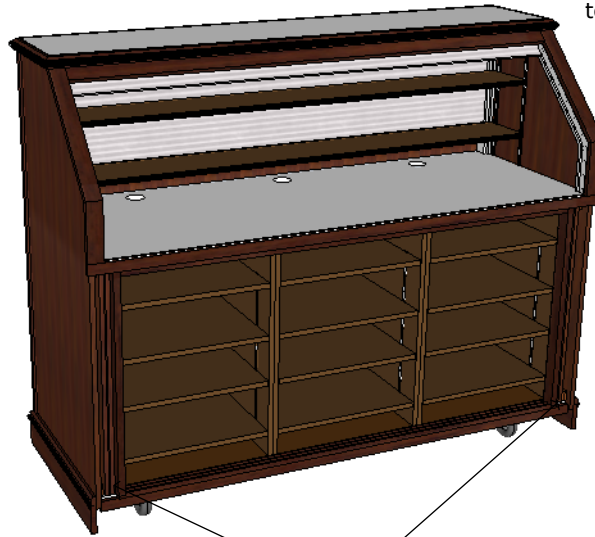
Crated for shipping dimensions:

- Length - 89"
- Width - 39"
- Height - 74"
- Weight - 1700 Lbs.

Accessories & Options:

- Full width adjustable top shelf
- Partial width adjustable top shelf
- Adjustable internal drawers & shelves
- Ice & Water Fill Station
- Sink
- Self Contained Hot & Cold Water
- Self Contained Cold Water
- Refrigerator
- Cups and Cold Drawers
- Counter top waste bucket with lid
- Counter top waste chute with lid
- Waste / recycle bins
- Roll-down anodized aluminum tambour-style door
- Umbrella Holder
- Vinyl cover
- Swinging doors
- Solid surface material counters

Model 8001TRD-S4-S4-S4-2
Shown with full width adjustable top shelving kit

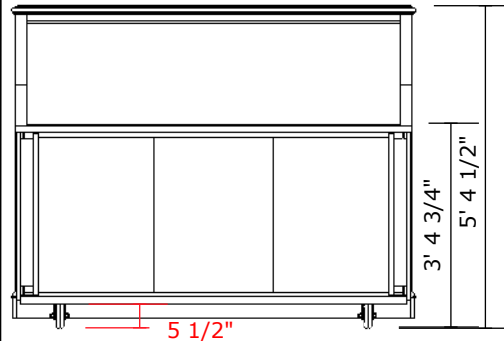


Shown with doors and roll-down door closed

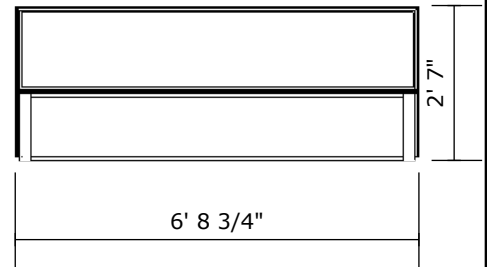


Sliding door storage slots

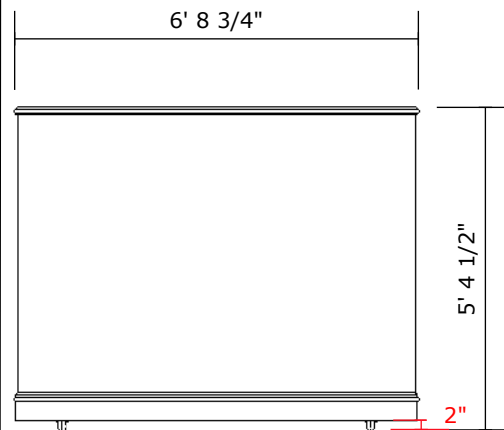
Front View



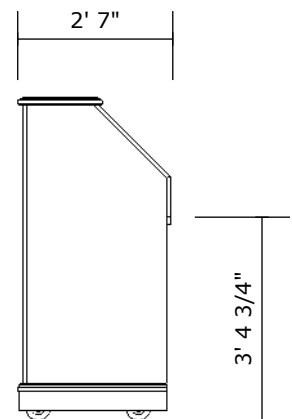
Top View



Back View



Side View

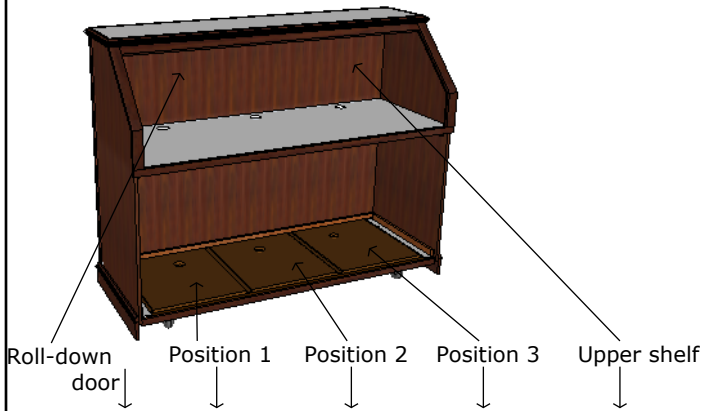


8001T Wait Stations

Configure Model Options

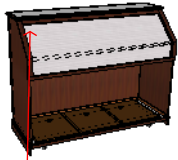
Start with an empty 8001T Wait Station (left) and configure it to meet your needs from the standard modular options below. Write the module codes for the corresponding position in the SKU # by making the following choices:

- 1) Choose roll-down door or no roll-down door
- 2) Choose position 1 module
- 3) Choose position 2 module
- 4) Choose position 3 module
- 5) Choose upper shelf module



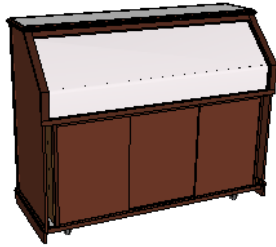
8001T - - - - - **Wait Station**

1) Choose roll-down door option

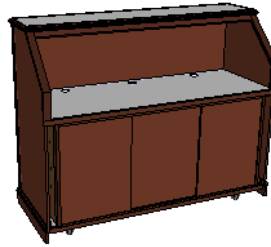


8001TRD- - - - -

Roll-down doors

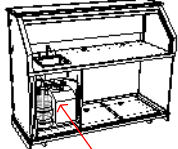


RD - Roll-down door anodized aluminum



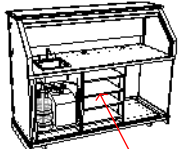
ND - No roll-down door

2) Choose position 1 module



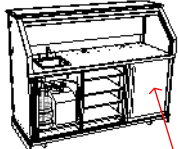
8001TRD-SHCW- - - - -

3) Choose position 2 module



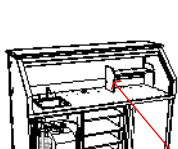
8001TRD-SHCW-S4- - - - -

4) Choose position 3 module



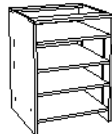
8001TRD-SHCW-S4-REF- - - - -

5) Choose upper shelf

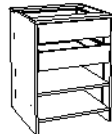


8001TRD-SHCW-S4-REF-1R

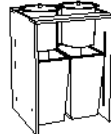
Configuration Modules



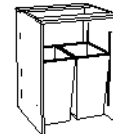
S4 - Shelf module with 4 adjustable shelves



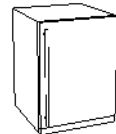
DS - Drawer & shelf with 2 adjustable drawers & 2 adjustable shelves



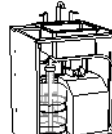
TRB or TRC - Recycle and waste bins with counter top buckets (B) or chutes (C)



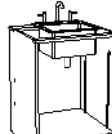
TR - Recycle and waste bins



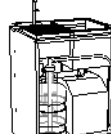
REF - 5.5 cu ft stainless steel refrigerator
Works best in position 3



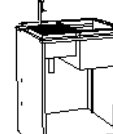
SHCW - Sink with self-contained hot and cold water (HCW)



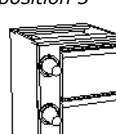
S - Sink



IWCW - Ice & water fill station with self-contained cold water (CW)



IW - Ice & water fill station

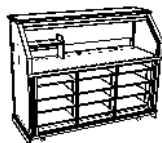


CD - Ice cooled stainless steel cold drawers (2) & cup dispensers (2)

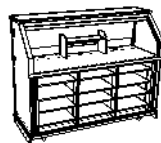
Upper Shelf



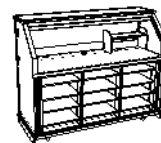
0 - No shelf



1L - Partial shelf left



1C - Partial shelf center



1R - Partial shelf right



2 - Full shelf

8001T Wait Stations

Pricing

Item Code	Description
8001T	Tall 80" Wait Station
RD	Anodized aluminum roll-down door
ND	NO roll-down door
S4	Shelf module
DS	Drawers & shelves module
TRB	Trash & recycle bins with countertop buckets
TRC	Trash & recycle bins with countertop chutes
TR	Trash & recycle bins
S	Sink
SHCW	Sink with self-contained hot & cold water
IW	Ice & water fill station
IWCW	Ice & water fill station with self-contained cold water
CD	Cup dispensers (2) & cold drawers (2)
REF	5.5 cu. Ft. stainless steel refrigerator
SOL **	Upgrade to solid surface counters
SWD **	Upgrade to swing doors
0	No upper shelf
1L	Partial upper shelf - Left
1C	Partial upper shelf - Center
1R	Partial upper shelf - Right
2	Full upper shelf
VC **	Vinyl Cover
UB **	Market Umbrella Holder Bracket

** Add code to end of item SKU #

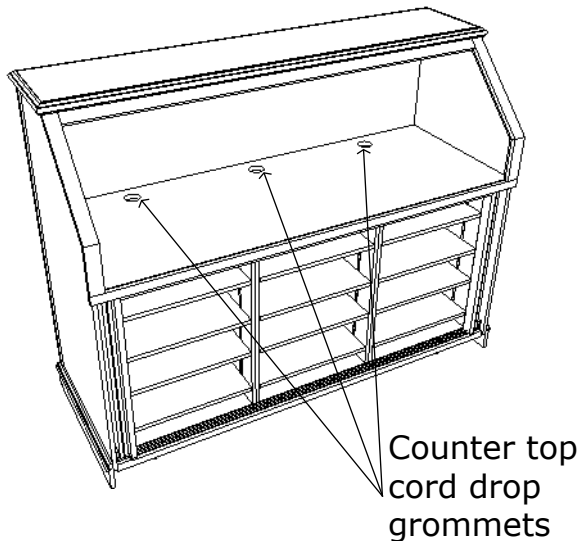
Mechanicals Access

All wait stations come with a 15 Amp 120V GFCI outlet with 9' cord and NEMA 5-15 plug type in the cabinet.

Counter tops have 2" access grommets for electric and data cables.

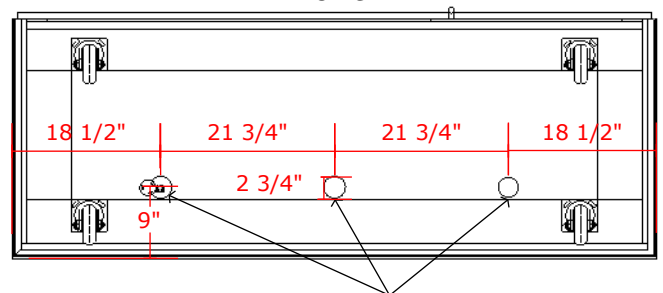
Access grommets are provided in the base of all units at fixed intervals for easy access to electrical, data and plumbing connections.

End user is responsible for final connections.



Bottom View

Front



Mechanicals Access Grommets

Shop Drawings - OK for production

Approved _____

Date _____